

## Cylindrical Mount

# PUFFER B



### Properties

- shock-isolating buffers with female thread and threaded stud
- extremely versatile supports used in a wide range of applications
- quick and easy assembly

### Applications

- elastic fixation and shock-isolating mounting of small to midsize equipment units such as electric motors, internal combustion engines, compressors, pumps, measuring devices, switchboards, control panels, instruments generally

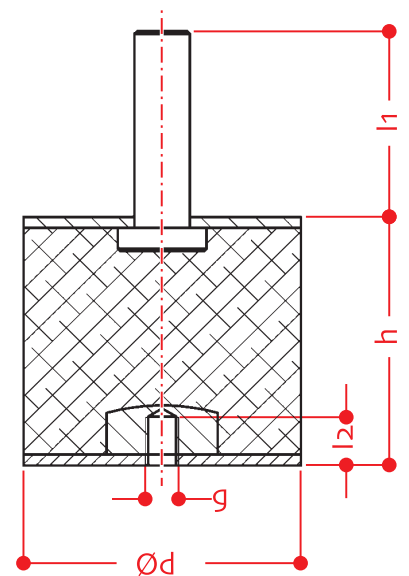


**Code - C2B0...**

**Material - Rubber/Metal**

**Hardness - 40 ÷ 65 shore A**

| ITEM   | Ø d | h  | l <sub>1</sub> | g   | l <sub>2</sub> |
|--------|-----|----|----------------|-----|----------------|
|        | mm  | mm | mm             |     | mm             |
| 25326  | 15  | 15 | 13             | M4  | 4.5            |
| 25259  | 15  | 30 | 16             | M4  | 4.5            |
| 31658  | 20  | 25 | 19             | M6  | 6              |
| 20292a | 25  | 15 | 18.5           | M6  | 6              |
| 20292  | 25  | 20 | 18.5           | M6  | 6              |
| 21239  | 25  | 30 | 18.5           | M6  | 6              |
| 31660  | 30  | 30 | 20.5           | M8  | 7              |
| 20291  | 40  | 30 | 24.5           | M8  | 7              |
| 27796  | 40  | 40 | 24.5           | M8  | 7              |
| 25332  | 50  | 20 | 28             | M10 | 8.8            |
| 25333  | 50  | 30 | 34             | M10 | 8.8            |
| 27797  | 50  | 45 | 34             | M10 | 8.8            |
| 20290  | 70  | 45 | 25             | M10 | 8.8            |
| 25327  | 75  | 40 | 37             | M12 | 11.5           |
| 25336  | 75  | 55 | 37             | M12 | 11.5           |
| 25334  | 100 | 40 | 43             | M16 | 17.5           |
| 25335  | 100 | 55 | 43             | M16 | 17.5           |



*continued on next page*

Cylindrical Mount

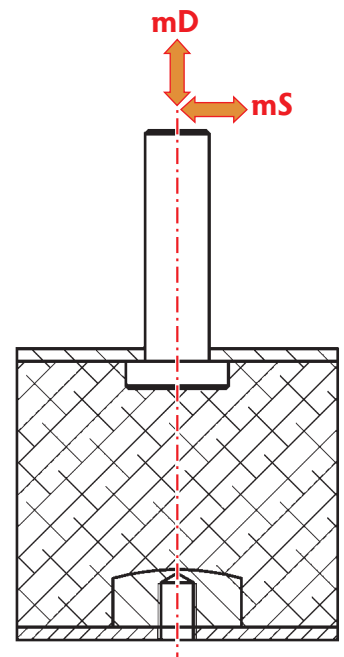
PUFFER B



Loads Table

Values of SUBSIDENCE values [s] in mm and NATURAL FREQUENCY [Vc] in cycles/min according to the shape and hardness of the rubber

| ITEM   | mD - COMPRESSION forces |            |      |            |      |            |      | mS - SHEAR forces |            |       |            |      |            |      |
|--------|-------------------------|------------|------|------------|------|------------|------|-------------------|------------|-------|------------|------|------------|------|
|        | kg                      | 40 shore A |      | 55 shore A |      | 65 shore A |      | kg                | 40°shore A |       | 55°shore A |      | 65°shore A |      |
|        |                         | s          | Vc   | s          | Vc   | s          | Vc   |                   | s          | Vc    | s          | Vc   | s          | Vc   |
| 25326  | 1,5                     | 0,40       | 1650 | 0,22       | 2267 | 0,15       | 2787 | 0,5               | 0,86       | 1054  | 0,47       | 1376 | 0,31       | 1775 |
|        | 4,5                     | 1,29       | 896  | 0,68       | 1252 | 0,44       | 1565 | 1,5               | 2,78       | 565   | 1,45       | 764  | 0,96       | 1000 |
|        | 9,0                     | 2,60       | 666  | 1,43       | 849  | 0,93       | 1053 | 3,5               | 7,11       | 362   | 3,67       | 467  | 2,35       | 617  |
| 25259  | 1,5                     | 1,19       | 927  | 0,66       | 1235 | 0,45       | 1500 | 1,5               | 4,20       | 505,1 | 2,39       | 658  | 1,63       | 792  |
|        | 4,5                     | 3,38       | 553  | 1,92       | 735  | 1,31       | 885  | 3,0               | 11,03      | 333,9 | 6,59       | 411  | 4,60       | 484  |
|        | 9,0                     | 6,47       | 403  | 3,70       | 529  | 2,53       | 644  | 6,0               | -          | -     | 13,34      | 320  | 9,73       | 345  |
| 31658  | 3                       | 1,04       | 1084 | 0,52       | 1444 | 0,39       | 1755 | 1,5               | 3,1        | 642   | 1,70       | 870  | 1,14       | 1064 |
|        | 9                       | 2,95       | 658  | 1,68       | 860  | 1,15       | 1035 | 3,0               | 6,30       | 438   | 3,41       | 613  | 2,28       | 751  |
|        | 15                      | 4,75       | 516  | 2,72       | 684  | 1,87       | 818  | 6,0               | 11,82      | 388   | 6,94       | 430  | 4,48       | 528  |
| 20292a | 5                       | 0,36       | 2025 | 0,20       | 2679 | 0,14       | 3244 | 2                 | 0,83       | 1432  | 0,45       | 1966 | 0,30       | 2415 |
|        | 15                      | 1,04       | 1220 | 0,59       | 1566 | 0,44       | 1913 | 6                 | 2,53       | 937   | 1,40       | 1053 | 0,92       | 1371 |
|        | 25                      | 1,62       | 1018 | 0,95       | 1263 | 0,63       | 1481 | 10                | 3,66       | 846   | 2,35       | 952  | 1,59       | 962  |
| 20292  | 5                       | 0,78       | 1202 | 0,45       | 1540 | 0,31       | 1836 | 2                 | 1,46       | 940   | 0,80       | 1268 | 0,54       | 1550 |
|        | 15                      | 2,12       | 707  | 1,21       | 943  | 0,85       | 1146 | 6                 | 4,55       | 492   | 2,40       | 733  | 1,61       | 895  |
|        | 25                      | 3,39       | 571  | 1,95       | 735  | 1,34       | 884  | 10                | 9,25       | 271   | 4,10       | 527  | 2,69       | 694  |
| 21239  | 5                       | 1,27       | 897  | 0,70       | 1196 | 0,48       | 1415 | 2                 | 2,67       | 620   | 1,43       | 858  | 0,95       | 1058 |
|        | 15                      | 3,64       | 544  | 2,00       | 709  | 1,39       | 870  | 6                 | 8,45       | 326   | 4,33       | 492  | 2,95       | 620  |
|        | 25                      | 5,66       | 462  | 3,36       | 561  | 2,24       | 655  | 10                | 17,82      | 169   | 7,60       | 349  | 4,86       | 454  |
| 31660  | 7                       | 1,09       | 946  | 0,60       | 1286 | 0,40       | 1576 | 5                 | 3,04       | 587   | 1,64       | 805  | 1,10       | 990  |
|        | 21                      | 3,34       | 516  | 1,81       | 729  | 1,20       | 899  | 15                | 9,79       | 318   | 5,12       | 446  | 3,36       | 557  |
|        | 35                      | 5,41       | 437  | 3,05       | 566  | 2,03       | 687  | 25                | 17,67      | 221   | 8,88       | 334  | 5,76       | 419  |
| 20291  | 10                      | 0,86       | 1124 | 0,48       | 1517 | 0,32       | 1852 | 5                 | 2,39       | 693   | 1,30       | 950  | 0,87       | 1166 |
|        | 30                      | 2,57       | 651  | 1,42       | 876  | 0,95       | 1069 | 15                | 7,78       | 368   | 4,01       | 529  | 2,65       | 658  |
|        | 60                      | 5,13       | 459  | 2,82       | 557  | 1,90       | 757  | 25                | 13,89      | 274   | 7,03       | 388  | 4,51       | 497  |
| 27796  | 10                      | 1,32       | 866  | 0,73       | 1168 | 0,49       | 1426 | 5                 | 3,99       | 488   | 2,16       | 671  | 1,44       | 824  |
|        | 30                      | 3,93       | 509  | 2,17       | 676  | 1,46       | 824  | 15                | 13,02      | 257   | 6,73       | 371  | 4,42       | 463  |
|        | 60                      | 7,73       | 360  | 4,30       | 488  | 2,91       | 585  | 25                | 24,44      | 172   | 11,77      | 272  | 7,58       | 348  |



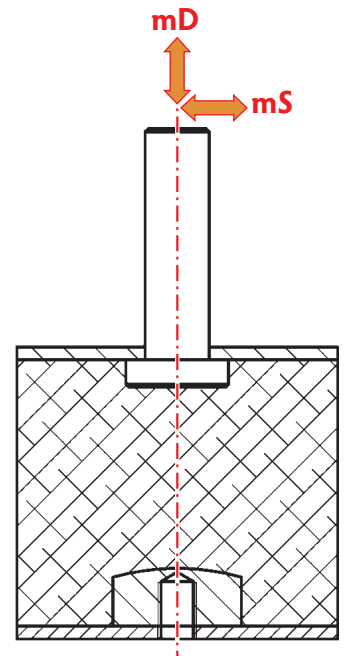
continued on next page

## Cylindrical Mount

### PUFFER B



| ITEM  | mD - COMPRESSION forces |            |      |            |      |            |      | mS - SHEAR forces |             |     |             |      |             |      |
|-------|-------------------------|------------|------|------------|------|------------|------|-------------------|-------------|-----|-------------|------|-------------|------|
|       | kg                      | 40 shore A |      | 55 shore A |      | 65 shore A |      | kg                | 40 °shore A |     | 55 °shore A |      | 65 °shore A |      |
|       |                         | s          | Vc   | s          | Vc   | s          | Vc   |                   | s           | Vc  | s           | Vc   | s           | Vc   |
| 25332 | 20                      | 0,46       | 1895 | 0,26       | 2545 | 0,18       | 3102 | 10                | 1,59        | 822 | 0,87        | 1115 | 0,58        | 1366 |
|       | 60                      | 1,34       | 1134 | 0,76       | 1488 | 0,51       | 1806 | 20                | 3,20        | 572 | 1,74        | 783  | 1,17        | 961  |
|       | 100                     | 2,14       | 883  | 1,23       | 1185 | 0,84       | 1411 | 40                | 6,66        | 394 | 3,53        | 541  | 2,35        | 675  |
| 25333 | 20                      | 1,14       | 958  | 0,64       | 1264 | 0,44       | 1530 | 10                | 2,79        | 560 | 1,52        | 764  | 1,02        | 937  |
|       | 60                      | 3,12       | 584  | 1,81       | 769  | 1,25       | 917  | 20                | 5,72        | 384 | 3,07        | 534  | 2,04        | 657  |
|       | 100                     | 5,04       | 459  | 2,88       | 618  | 2,01       | 733  | 40                | 12,20       | 258 | 6,32        | 363  | 4,15        | 456  |
| 27797 | 20                      | 1,76       | 751  | 0,97       | 1012 | 0,65       | 1236 | 10                | 4,95        | 422 | 2,70        | 574  | 1,80        | 703  |
|       | 60                      | 5,19       | 448  | 2,89       | 586  | 1,94       | 715  | 20                | 10,12       | 288 | 5,44        | 402  | 3,62        | 494  |
|       | 100                     | 8,36       | 354  | 4,77       | 463  | 3,22       | 555  | 40                | 21,67       | 192 | 11,18       | 273  | 7,33        | 343  |
| 20290 | 35                      | 1,44       | 875  | 0,80       | 1172 | 0,54       | 1428 | 20                | 4,35        | 447 | 2,36        | 612  | 1,58        | 751  |
|       | 110                     | 4,37       | 514  | 2,46       | 672  | 1,66       | 815  | 40                | 8,93        | 308 | 4,79        | 426  | 3,18        | 525  |
|       | 190                     | 7,36       | 391  | 4,16       | 526  | 2,84       | 627  | 75                | 17,66       | 213 | 9,20        | 303  | 6,07        | 376  |
| 25327 | 40                      | 1,01       | 992  | 0,56       | 1338 | 0,38       | 1633 | 20                | 3,13        | 561 | 1,71        | 759  | 1,15        | 927  |
|       | 120                     | 2,98       | 585  | 1,66       | 776  | 1,11       | 945  | 45                | 7,10        | 369 | 3,86        | 504  | 2,59        | 617  |
|       | 220                     | 5,34       | 437  | 3,00       | 583  | 2,03       | 700  | 90                | 14,49       | 254 | 7,81        | 352  | 5,19        | 435  |
| 25336 | 40                      | 1,79       | 747  | 0,99       | 1004 | 0,67       | 1224 | 20                | 4,89        | 464 | 2,65        | 635  | 1,77        | 779  |
|       | 120                     | 5,24       | 444  | 2,93       | 586  | 1,97       | 712  | 45                | 11,42       | 298 | 6,07        | 416  | 4,03        | 514  |
|       | 220                     | 9,33       | 332  | 5,27       | 442  | 3,58       | 530  | 90                | 23,91       | 206 | 12,61       | 284  | 8,23        | 354  |
| 25334 | 75                      | 0,75       | 1206 | 0,41       | 1627 | 0,27       | 1987 | 35                | 2,45        | 656 | 1,33        | 898  | 0,89        | 1102 |
|       | 225                     | 2,24       | 696  | 1,23       | 939  | 0,82       | 1147 | 75                | 5,43        | 432 | 2,89        | 601  | 1,92        | 744  |
|       | 400                     | 3,88       | 541  | 2,17       | 704  | 1,45       | 860  | 150               | 11,53       | 294 | 6,00        | 410  | 3,93        | 513  |
| 25335 | 75                      | 1,65       | 775  | 0,91       | 1046 | 0,61       | 1277 | 35                | 4,56        | 482 | 2,48        | 658  | 1,66        | 806  |
|       | 220                     | 4,90       | 455  | 2,71       | 604  | 1,82       | 737  | 75                | 10,03       | 320 | 5,38        | 443  | 3,58        | 546  |
|       | 400                     | 8,47       | 350  | 4,79       | 460  | 3,23       | 553  | 150               | 21,26       | 216 | 11,07       | 304  | 7,28        | 378  |



ATAG reserves the right to make changes without notice, by virtue of any quality improvements and/or product specifications • nov\_18\_rdb