

Cylindrical Mount

PUFFER C



Properties

- shock-isolating buffers with female thread on both sides
- extremely versatile supports used in a wide range of applications
- quick and easy assembly

Applications

- elastic fixation and shock-isolating mounting of small to midsize equipment units such as electric motors, internal combustion engines, compressors, pumps, measuring devices, switchboards, control panels, instruments generally

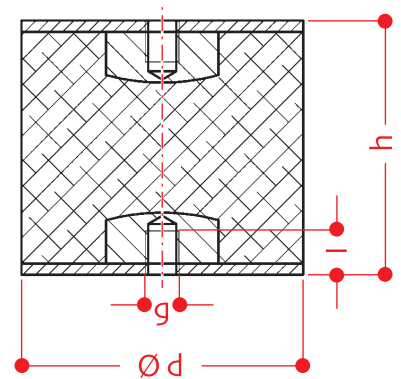


Code - C2C0....

Material - Rubber/Metal

Hardness - 40 ÷ 65 shore A

ITEM	Ø d	h	l	g
	mm	mm	mm	
21887	13	26	5	M 4
25326	15	15	4.5	M 4
31658	20	25	6	M 6
25356	30	20	7	M 8
31660	30	30	7	M 8
20291	40	30	7	M 8
27796	40	40	7	M 8
27797	50	45	8.8	M 10
20290	70	45	8.8	M 10
25336	75	55	11.5	M 12
25328	100	75	17.5	M 16
31475	150	55	20	≥ M 20
25303	150	75	20	≥ M 20
25329	200	100	20	≥ M 20



continued on next page

Cylindrical Mount

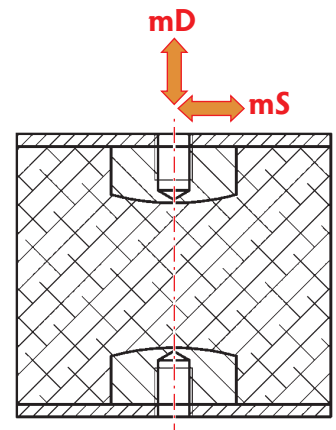
PUFFER C



Loads Table

Values of SUBSIDENCE values [s] in mm and NATURAL FREQUENCY [Vc] in cycles/min according to the shape and hardness of the rubber

ITEM	mD - COMPRESSION forces							mS - SHEAR forces						
	kg	40 shore A		55 shore A		65 shore A		kg	40 shore A		55 shore A		65 shore A	
		s	Vc	s	Vc	s	Vc		s	Vc	s	Vc	s	Vc
21887	1,5	1,06	923	0,58	1246	0,39	1522	0,5	2,49	591	1,35	809	0,90	994
	3,5	2,47	596	1,35	816	0,91	996	1,5	7,69	355	4,18	450	2,75	560
	6,5	4,61	437	2,52	590	1,68	731	3,5	15,29	284	9,57	330	6,65	365
25326	1,5	0,40	1620	0,22	2226	0,15	2737	0,5	0,86	1456	0,47	1995	0,31	2451
	4,5	1,29	880	0,68	1230	0,44	1537	1,5	2,78	780	1,45	1108	0,96	1380
	9,0	2,60	655	1,43	834	0,93	1034	3,5	7,11	500	3,67	677	2,35	853
31658	3	1,04	1084	0,52	1444	0,39	1755	1,5	3,10	696	1,70	943	1,14	1153
	9	2,95	658	1,68	860	1,15	1035	3,0	6,30	475	3,41	664	2,28	814
	15	4,75	516	2,72	684	1,87	818	6,0	11,82	420	6,94	465	4,48	572
25356	7	0,42	1610	0,25	2020	0,18	2379	3	0,96	966	0,53	1307	0,35	1598
	21	0,97	1173	0,63	1355	0,46	1554	9	2,82	583	1,58	750	1,06	919
	35	1,39	899	0,91	1200	0,68	1307	15	4,49	474	2,59	605	1,77	718
31660	7	1,09	991	0,60	1348	0,40	1651	5	3,04	641	1,64	878	1,10	1080
	21	3,34	567	1,81	763	1,20	942	15	9,79	347	5,12	486	3,36	607
	35	5,41	458	3,05	593	2,03	719	25	17,67	241	8,88	365	5,76	457
20291	10	0,86	1278	0,48	1724	0,32	2105	5	2,39	754	1,30	1033	0,87	1268
	30	2,57	740	1,42	995	0,95	1215	15	7,78	400	4,01	575	2,65	715
	60	5,13	521	2,82	633	1,90	860	25	13,89	298	7,03	421	4,51	540
27796	10	1,32	908	0,73	1223	0,49	1494	5	3,99	512	2,16	703	1,44	864
	30	3,93	534	2,17	708	1,46	864	15	13,02	270	6,73	388	4,42	485
	60	7,73	377	4,30	512	2,91	613	25	24,44	180	11,77	285	7,58	364
27797	20	1,76	751	0,97	1012	0,65	1236	10	4,95	464	2,70	631	1,80	773
	60	5,19	448	2,89	586	1,94	715	20	10,12	317	5,44	442	3,62	543
	100	8,36	354	4,77	463	3,22	555	40	21,67	211	11,18	300	7,33	377
20290	35	1,44	1034	0,80	1385	0,54	1687	20	4,35	559	2,36	765	1,58	939
	110	4,37	607	2,46	794	1,66	963	40	8,93	385	4,79	533	3,18	656
	190	7,36	462	4,16	621	2,84	741	75	17,66	266	9,20	379	6,07	470



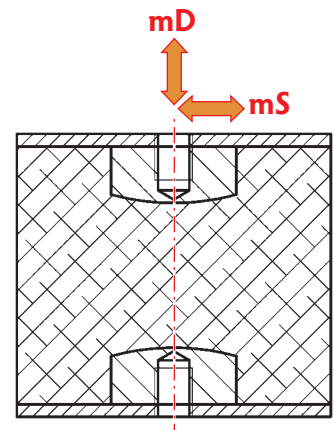
continued on next page

Cylindrical Mount

PUFFER C



ITEM	mD - COMPRESSION forces							mS - SHEAR forces						
	kg	40 shore A		55 shore A		65 shore A		kg	40 shore A		55 shore A		65 shore A	
		s	Vc	s	Vc	s	Vc		s	Vc	s	Vc	s	Vc
25336	40	1,79	782	0,99	1052	0,67	1283	20	4,89	464	2,65	635	1,77	779
	120	5,24	465	2,93	614	1,97	746	45	11,42	298	6,07	416	4,03	514
	220	9,33	348	5,27	463	3,58	556	90	23,91	206	12,61	284	8,23	354
25328	75	2,55	595	1,40	801	0,94	977	35	6,21	375	3,38	512	2,26	628
	225	7,47	354	4,17	466	2,81	567	75	13,70	248	7,33	345	4,87	425
	400	12,90	269	7,30	358	4,96	428	150	30,36	153	15,14	233	9,92	295
31475	175	1,02	948	0,56	1271	0,38	1548	75	3,28	523	1,80	705	1,21	861
	500	2,80	585	1,58	763	1,07	925	175	7,69	337	4,20	462	2,82	564
	900	4,82	444	2,77	588	1,89	698	350	--	--	8,46	319	5,63	399
25303	175	2,11	658	1,17	880	0,79	1070	75	5,03	418	2,74	569	1,83	698
	500	5,78	410	3,27	532	2,22	643	175	12,08	264	6,48	367	4,31	452
	900	10,00	308	5,71	412	3,92	488	350	25,89	170	13,33	251	8,76	314
25329	300	3,14	539	1,74	722	1,17	879	150	8,76	315	4,75	431	3,17	529
	950	9,51	316	5,38	414	3,65	501	350	21,39	197	11,31	276	7,49	342
	1700	16,50	239	9,36	321	6,42	380	600	37,76	153	20,04	204	13,07	256



ATAG reserves the right to make changes without notice, by virtue of any quality improvements and/or product specifications • nov_18 rdb