

Cylindrical Mount

PUFFER D



Properties

- stop buffers, with a single metal plate, are suitable for all types of end stops and for vibration-insulating mounting of small to midsize equipment units
- stop buffers with single threaded stud
- extremely versatile supports used in a wide range of applications
- quick and easy assembly

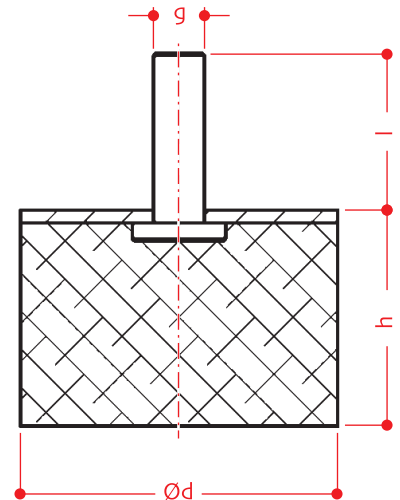
Applications

- cushioning and bumper
- vibration-insulating mounting of small to midsize equipment units



Code - C2D0....
Material - Rubber/Metal
Hardness - 40 ÷ 65 shore A

ITEM	Ø d <i>mm</i>	h <i>mm</i>	l <i>mm</i>	g
25326	15	13	13	M 4
25259	15	28	16	M 4
31658	20	23	19	M 6
25388	25	8	18.5	M 6
20292a	25	13	18.5	M 6
20292	25	18	18.5	M 6
21239	25	28	18.5	M 6
31660	30	28	20.5	M 8
20291	40	28	24.5	M 8
27796	40	38	24.5	M 8
25332	50	17	28	M 10
25333	50	27	34	M 10
27797	50	42	34	M 10
20290	70	42	25	M 10
25327	75	36	37	M 12
25336	75	51	37	M 12
25334	100	35	43	M 16
25335	100	50	43	M 16



continued on next page

Cylindrical Mount

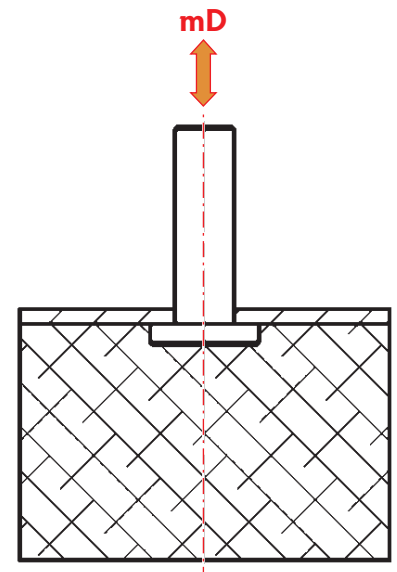
PUFFER D



Loads Table

Values of SUBSIDENCE values [s] in mm and NATURAL FREQUENCY [Vc] in cycles/min according to the shape and hardness of the rubber

ITEM	mD - COMPRESSION forces						
	kg	40 shore A		55 shore A		65 shore A	
		s	Vc	s	Vc	s	Vc
25326	1,5	0,40	1473	0,22	2024	0,15	2488
	4,5	1,29	800	0,68	1118	0,44	1397
	9,0	6,47	384	3,70	504	2,53	613
25259	1,5	1,19	883	0,66	1176	0,45	1429
	4,5	3,38	527	1,92	700	1,31	843
	9,0	6,47	384	3,70	504	2,53	613
31658	3,0	1,04	943	0,58	1256	0,39	1526
	9,0	2,95	572	1,68	748	1,15	900
	15	4,75	449	2,72	595	1,87	711
25388	5,0	0,08	3102	0,04	4187	0,03	5114
	15	0,29	1791	0,17	2418	0,11	2953
	25	0,47	1387	0,27	1873	0,18	2287
20292a	5,0	0,37	1605	0,21	2123	0,14	2570
	15	1,00	971	0,58	1311	0,40	1566
	25	1,64	752	0,92	1016	0,65	1240
20292	5,0	0,75	1097	0,41	1480	0,28	1808
	15	2,32	601	1,24	839	0,83	1037
	25	4,06	440	2,11	633	1,39	790
21239	5,0	1,23	854	0,68	1153	0,46	1408
	15	3,76	486	2,05	656	1,36	806
	25	6,29	376	3,43	508	2,29	620
31660	7,0	1,09	901	0,60	1225	0,40	1501
	21	3,34	515	1,81	694	1,20	856
	35	5,40	442	3,04	540	2,02	446
20291	10	0,86	1022	0,48	1379	0,32	1684
	30	2,57	592	1,42	796	0,95	972
	60	5,13	417	2,82	566	1,90	688
27796	10	1,32	825	0,73	1112	0,49	1358
	30	3,93	485	2,17	644	1,46	785
	60	7,73	343	4,30	465	2,91	557
24332	20	0,46	1404	0,26	1885	0,18	2298
	60	1,34	840	0,76	1102	0,51	1338
	100	2,14	654	1,23	878	0,84	1045



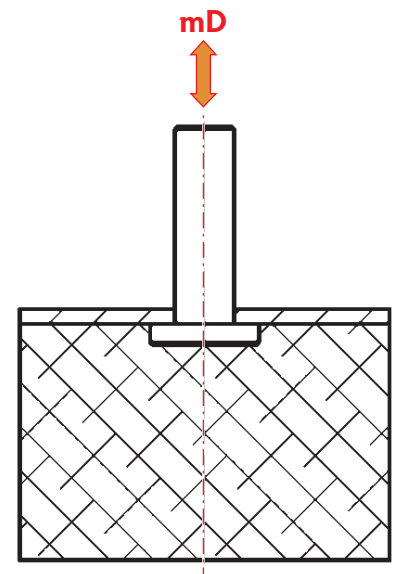
continued on next page

Cylindrical Mount

PUFFER D



ITEM	mD - COMPRESSION forces						
	kg	40 shore A		55 shore A		65 shore A	
		s	Vc	s	Vc	s	Vc
25333	20	1,14	912	0,64	1204	0,44	1457
	60	3,12	556	1,81	732	1,25	873
	100	5,04	437	2,88	589	2,01	698
27797	20	1,76	715	0,97	964	0,65	1177
	60	5,19	427	2,89	558	1,94	681
	100	8,36	337	4,77	441	3,22	529
20290	35	1,44	795	0,80	1065	0,54	1298
	110	4,37	467	2,46	611	1,66	741
	190	7,36	355	4,16	478	2,84	570
25327	40	1,01	945	0,56	1274	0,38	1555
	120	2,98	557	1,66	739	1,11	900
	220	5,34	416	3,00	555	2,03	667
25336	40	1,79	711	0,99	956	0,67	1166
	120	5,24	423	2,93	558	1,97	678
	220	9,33	316	5,27	421	3,58	505
25334	75	0,75	1096	0,41	1479	0,27	1806
	225	2,24	633	1,23	854	0,82	1043
	400	3,88	492	2,17	640	1,45	782
25335	75	1,65	738	0,91	996	0,61	1216
	225	4,90	433	2,71	575	1,82	702
	400	8,47	333	4,79	438	3,23	527



ATAG reserves the right to make changes without notice, by virtue of any quality improvements and/or product specifications • nov_18 rdb